

PERUGIA 2000

CAMERA DI COMMERCIO DI PERUGIA

Categoria: SUINI VIVI

Prezzi: (Franco Partenza) Per Kg peso vivo - IVA esclusa

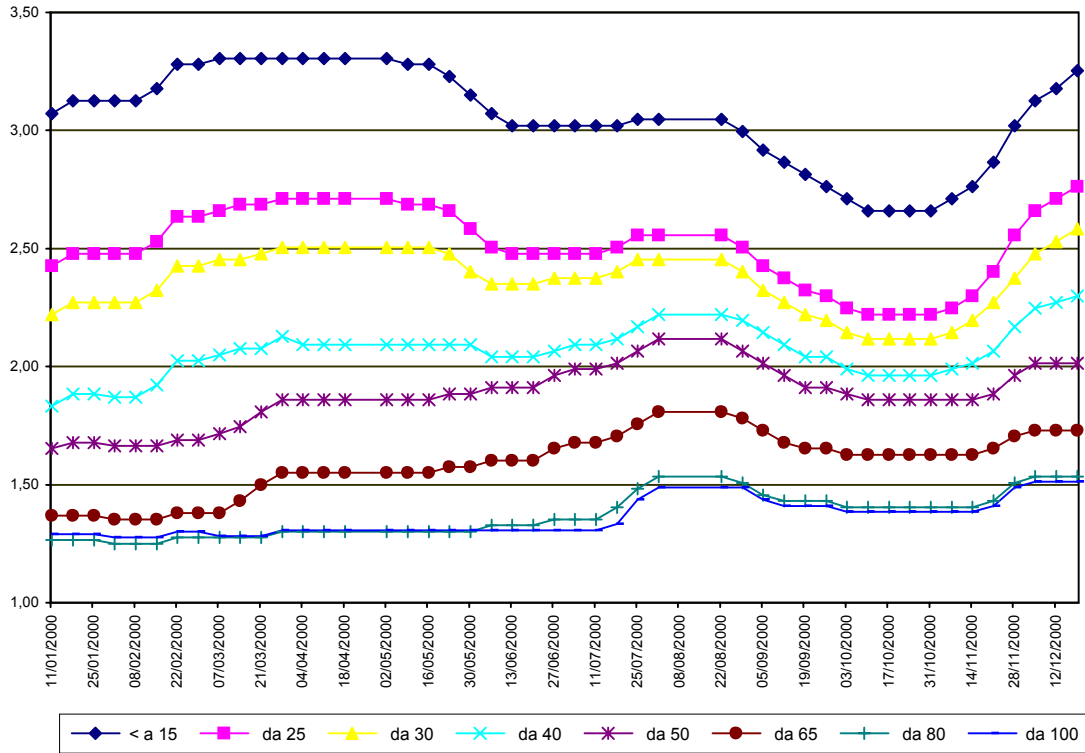
di Cosmino Giovanni Basile

SETTIMANE	SUINI D'ALLEVAMENTO (€/Kg)							
	< a 15	da 25	da 30	da 40	da 50	da 65	da 80	da 100
11/01/2000	3,07	2,43	2,22	1,83	1,65	1,37	1,27	1,29
18/01/2000	3,12	2,48	2,27	1,89	1,68	1,37	1,27	1,29
25/01/2000	3,12	2,48	2,27	1,89	1,68	1,37	1,27	1,29
01/02/2000	3,12	2,48	2,27	1,87	1,66	1,35	1,25	1,28
08/02/2000	3,12	2,48	2,27	1,87	1,66	1,35	1,25	1,28
15/02/2000	3,18	2,53	2,32	1,92	1,66	1,35	1,25	1,28
22/02/2000	3,28	2,63	2,43	2,02	1,69	1,38	1,28	1,30
29/02/2000	3,28	2,63	2,43	2,02	1,69	1,38	1,28	1,30
07/03/2000	3,31	2,66	2,45	2,05	1,71	1,38	1,28	1,28
14/03/2000	3,31	2,69	2,45	2,08	1,75	1,43	1,28	1,28
21/03/2000	3,31	2,69	2,48	2,08	1,81	1,50	1,28	1,28
28/03/2000	3,31	2,71	2,50	2,13	1,86	1,55	1,30	1,31
04/04/2000	3,31	2,71	2,50	2,09	1,86	1,55	1,30	1,31
11/04/2000	3,31	2,71	2,50	2,09	1,86	1,55	1,30	1,31
18/04/2000	3,31	2,71	2,50	2,09	1,86	1,55	1,30	1,31
02/05/2000	3,31	2,71	2,50	2,09	1,86	1,55	1,30	1,31
09/05/2000	3,28	2,69	2,50	2,09	1,86	1,55	1,30	1,31
16/05/2000	3,28	2,69	2,50	2,09	1,86	1,55	1,30	1,31
23/05/2000	3,23	2,66	2,48	2,09	1,89	1,58	1,30	1,31
30/05/2000	3,15	2,58	2,40	2,09	1,89	1,58	1,30	1,31
06/06/2000	3,07	2,50	2,35	2,04	1,91	1,60	1,33	1,31
13/06/2000	3,02	2,48	2,35	2,04	1,91	1,60	1,33	1,31
20/06/2000	3,02	2,48	2,35	2,04	1,91	1,60	1,33	1,31
27/06/2000	3,02	2,48	2,38	2,07	1,96	1,65	1,35	1,31
04/07/2000	3,02	2,48	2,38	2,09	1,99	1,68	1,35	1,31
11/07/2000	3,02	2,48	2,38	2,09	1,99	1,68	1,35	1,31
18/07/2000	3,02	2,50	2,40	2,12	2,01	1,70	1,40	1,33
25/07/2000	3,05	2,56	2,45	2,17	2,07	1,76	1,48	1,44
01/08/2000	3,05	2,56	2,45	2,22	2,12	1,81	1,53	1,49
22/08/2000	3,05	2,56	2,45	2,22	2,12	1,81	1,53	1,49
29/08/2000	3,00	2,50	2,40	2,19	2,07	1,78	1,51	1,49
05/09/2000	2,92	2,43	2,32	2,14	2,01	1,73	1,46	1,44
12/09/2000	2,87	2,38	2,27	2,09	1,96	1,68	1,43	1,41
19/09/2000	2,81	2,32	2,22	2,04	1,91	1,65	1,43	1,41
26/09/2000	2,76	2,30	2,19	2,04	1,91	1,65	1,43	1,41
03/10/2000	2,71	2,25	2,14	1,99	1,89	1,63	1,40	1,38
10/10/2000	2,66	2,22	2,12	1,96	1,86	1,63	1,40	1,38
17/10/2000	2,66	2,22	2,12	1,96	1,86	1,63	1,40	1,38
24/10/2000	2,66	2,22	2,12	1,96	1,86	1,63	1,40	1,38
31/10/2000	2,66	2,22	2,12	1,96	1,86	1,63	1,40	1,38
07/11/2000	2,71	2,25	2,14	1,99	1,86	1,63	1,40	1,38
14/11/2000	2,76	2,30	2,19	2,01	1,86	1,63	1,40	1,38
21/11/2000	2,87	2,40	2,27	2,07	1,89	1,65	1,43	1,41
28/11/2000	3,02	2,56	2,38	2,17	1,96	1,70	1,51	1,49
05/12/2000	3,12	2,66	2,48	2,25	2,01	1,73	1,53	1,51
12/12/2000	3,18	2,71	2,53	2,27	2,01	1,73	1,53	1,51
19/12/2000	3,25	2,76	2,58	2,30	2,01	1,73	1,53	1,51
MEDIA	3,06	2,51	2,36	2,06	1,88	1,59	1,37	1,36

PERUGIA 2000

SETTIMANE	SUINI DA MACELLO (€/Kg)							
	90/115	115/130	130/144	144/156	156/176	176/180	180/185	> 185
11/01/2000	1,286	1,141	1,188	1,229	1,239	1,209	1,126	1,069
18/01/2000	1,234	1,090	1,136	1,178	1,188	1,157	1,074	1,017
25/01/2000	1,188	1,043	1,090	1,131	1,141	1,110	1,028	0,971
01/02/2000	1,167	1,023	1,069	1,110	1,121	1,090	1,007	0,950
08/02/2000	1,167	1,023	1,069	1,110	1,121	1,090	1,007	0,950
15/02/2000	1,219	1,074	1,121	1,162	1,172	1,141	1,059	1,002
22/02/2000	1,260	1,116	1,162	1,203	1,214	1,183	1,100	1,043
29/02/2000	1,239	1,095	1,141	1,183	1,193	1,162	1,079	1,023
07/03/2000	1,188	1,074	1,121	1,162	1,172	1,141	1,059	1,002
14/03/2000	1,188	1,074	1,121	1,162	1,172	1,141	1,059	1,002
21/03/2000	1,188	1,074	1,121	1,162	1,172	1,141	1,059	1,002
28/03/2000	1,167	1,054	1,100	1,141	1,152	1,116	1,033	0,976
04/04/2000	1,147	1,033	1,079	1,121	1,131	1,095	1,012	0,955
11/04/2000	1,121	0,997	1,043	1,085	1,095	1,059	0,976	0,919
18/04/2000	1,121	0,997	1,043	1,085	1,095	1,059	0,976	0,919
02/05/2000	1,131	1,007	1,054	1,095	1,105	1,069	0,986	0,930
09/05/2000	1,131	1,007	1,054	1,095	1,105	1,069	0,986	0,930
16/05/2000	1,157	1,007	1,054	1,095	1,105	1,069	0,986	0,930
23/05/2000	1,157	0,950	0,997	1,038	1,048	1,028	0,924	0,862
30/05/2000	1,147	0,924	0,971	1,012	1,023	0,976	0,883	0,821
06/06/2000	1,147	0,899	0,945	0,986	0,976	0,950	0,837	0,795
13/06/2000	1,147	0,899	0,945	0,986	0,986	0,950	0,837	0,795
20/06/2000	1,198	0,940	0,986	1,028	1,028	0,992	0,878	0,837
27/06/2000	1,250	0,997	1,043	1,085	1,085	1,048	0,935	0,893
04/07/2000	1,276	1,023	1,069	1,110	1,110	1,074	0,961	0,919
11/07/2000	1,276	1,012	1,059	1,100	1,100	1,064	0,950	0,909
18/07/2000	1,332	1,069	1,116	1,157	1,157	1,121	1,007	0,966
25/07/2000	1,425	1,162	1,209	1,250	1,250	1,214	1,100	1,059
01/08/2000	1,462	1,198	1,245	1,286	1,286	1,250	1,136	1,095
22/08/2000	1,524	1,276	1,322	1,358	1,363	1,322	1,234	1,172
29/08/2000	1,472	1,276	1,322	1,358	1,363	1,322	1,234	1,172
05/09/2000	1,420	1,250	1,296	1,332	1,338	1,296	1,209	1,147
12/09/2000	1,394	1,250	1,296	1,332	1,338	1,296	1,209	1,147
19/09/2000	1,420	1,291	1,338	1,374	1,379	1,338	1,250	1,188
26/09/2000	1,498	1,353	1,400	1,436	1,441	1,400	1,312	1,250
03/10/2000	1,420	1,301	1,348	1,384	1,389	1,348	1,260	1,198
10/10/2000	1,420	1,301	1,348	1,384	1,389	1,348	1,260	1,198
17/10/2000	1,446	1,338	1,384	1,420	1,425	1,384	1,296	1,234
24/10/2000	1,446	1,338	1,384	1,420	1,425	1,384	1,296	1,234
31/10/2000	1,425	1,317	1,363	1,400	1,405	1,363	1,276	1,214
07/11/2000	1,425	1,317	1,363	1,400	1,405	1,363	1,276	1,214
14/11/2000	1,446	1,338	1,384	1,420	1,425	1,384	1,296	1,234
21/11/2000	1,487	1,379	1,425	1,462	1,467	1,425	1,338	1,276
28/11/2000	1,555	1,446	1,493	1,529	1,534	1,493	1,405	1,343
05/12/2000	1,565	1,456	1,503	1,539	1,544	1,503	1,415	1,353
12/12/2000	1,565	1,456	1,503	1,539	1,544	1,503	1,415	1,353
19/12/2000	1,565	1,456	1,503	1,539	1,544	1,503	1,415	1,353
MEDIA	1,311	1,152	1,198	1,238	1,244	1,207	1,116	1,060

PERUGIA 2000
SUINI D'ALLEVAMENTO
 (Euro/Kg)



PERUGIA 2000
SUINI DA MACELLO
 (Euro/Kg)

