



12/2012

Mercato
Mercati esteri

4.5.19.2

ERSAF
ENTE REGIONALE PER I SERVIZI
ALL'AGRICOLTURA E ALLE FORESTE

FRANCIA 2012

PLERIN (BRETAGNA)

Categoria: SUINI MORTI con testa, lingua, reni, zampette e sugna

Prezzi: (Franco partenza) - IVA esclusa

di Cosmino Giovanni Basile

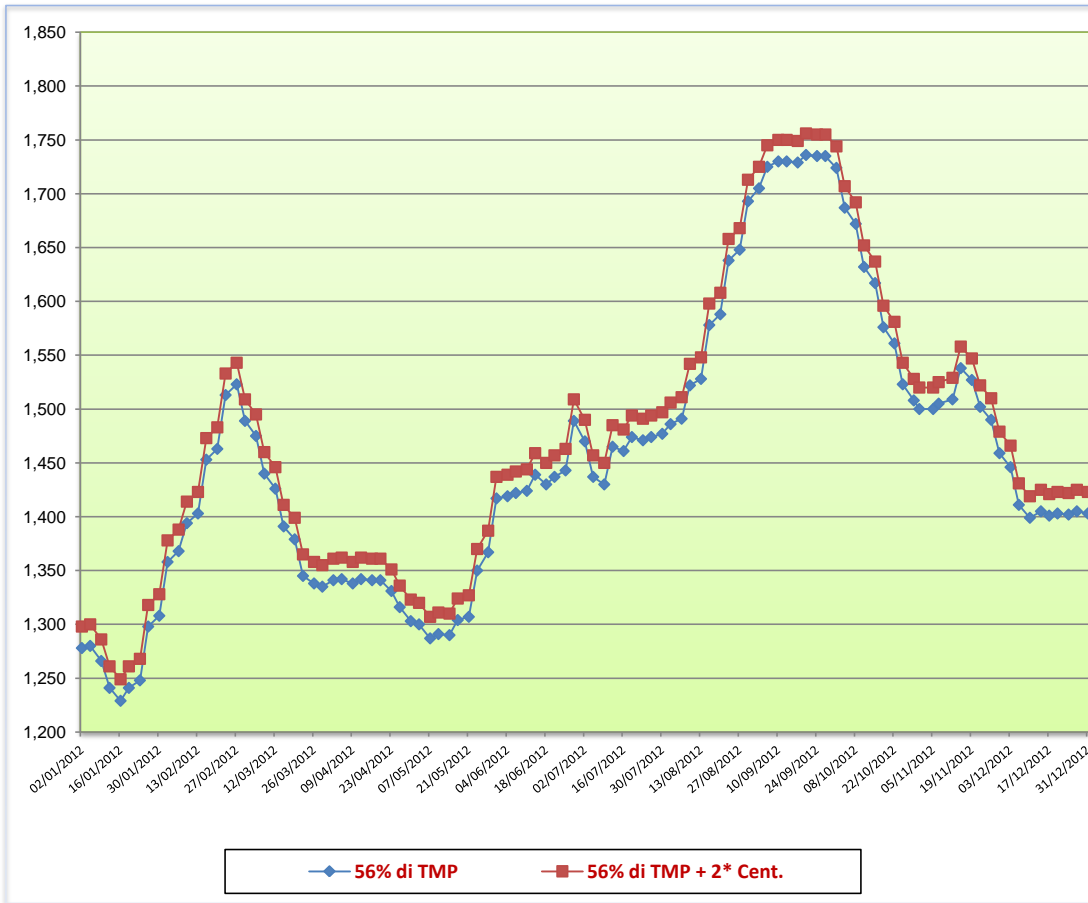
SETTIMANE	CARCASSE		SUINI MACELLATI n°	Peso medio macellate Kg
	Euro/Kg 56% di TMP	Euro/Kg 56% di TMP + 2* Cent.		
02/01/2012	1,278	1,298		
05/01/2012	1,280	1,300	412.690	92,82
09/01/2012	1,266	1,286		
12/01/2012	1,241	1,261	390.482	92,41
16/01/2012	1,229	1,249		
19/01/2012	1,241	1,261	392.411	92,32
23/01/2012	1,248	1,268		
26/01/2012	1,298	1,318	394.694	92,26
30/01/2012	1,308	1,328		
02/02/2012	1,358	1,378	390.560	92,28
06/02/2012	1,368	1,388		
09/02/2012	1,394	1,414	380.247	92,00
13/02/2012	1,403	1,423		
16/02/2012	1,453	1,473	380.407	92,01
20/02/2012	1,463	1,483		
23/02/2012	1,513	1,533	375.241	92,28
27/02/2012	1,523	1,543		
01/03/2012	1,489	1,509	378.484	92,55
05/03/2012	1,475	1,495		
08/03/2012	1,440	1,460	377.706	92,51
12/03/2012	1,426	1,446		
15/03/2012	1,391	1,411	385.157	92,67
19/03/2012	1,379	1,399		
22/03/2012	1,345	1,365	383.198	92,45
26/03/2012	1,338	1,358		
29/03/2012	1,335	1,355	391.395	92,43
02/04/2012	1,341	1,361		
05/04/2012	1,342	1,362	393.336	92,28
09/04/2012	1,338	1,358		
12/04/2012	1,342	1,362	328.842	92,63
16/04/2012	1,341	1,361		
19/04/2012	1,341	1,361	392.450	92,51
23/04/2012	1,331	1,351		
26/04/2012	1,316	1,336	395.602	92,09
30/04/2012	1,303	1,323		
03/05/2012	1,300	1,320	346.287	92,30
07/05/2012	1,287	1,307		
10/05/2012	1,291	1,311	348.112	92,55
14/05/2012	1,290	1,310		
17/05/2012	1,304	1,324	341.131	92,46
21/05/2012	1,307	1,327		
24/05/2012	1,350	1,370	411.113	92,63
28/05/2012	1,367	1,387		
31/05/2012	1,417	1,437	341.890	92,46
04/06/2012	1,419	1,439		
07/06/2012	1,422	1,442	397.720	92,29
11/06/2012	1,424	1,444		
14/06/2012	1,439	1,459	380.981	91,78
18/06/2012	1,430	1,450		
21/06/2012	1,437	1,457	371.832	91,62
25/06/2012	1,443	1,463		

28/06/2012	1,489	1,509	366.629	91,45
02/07/2012	1,470	1,490		
05/07/2012	1,437	1,457	370.063	91,49
09/07/2012	1,430	1,450		
12/07/2012	1,465	1,485	369.862	91,38
16/07/2012	1,461	1,481		
19/07/2012	1,474	1,494	364.166	91,41
23/07/2012	1,471	1,491		
26/07/2012	1,474	1,494	369.796	91,15
30/07/2012	1,477	1,497		
02/08/2012	1,486	1,506	370.422	91,16
06/08/2012	1,491	1,511		
09/08/2012	1,522	1,542	377.719	91,03
13/08/2012	1,528	1,548		
16/08/2012	1,578	1,598	325.064	91,24
20/08/2012	1,588	1,608		
23/08/2012	1,638	1,658	377.474	91,44
27/08/2012	1,648	1,668		
30/08/2012	1,693	1,713	381.460	91,23
03/09/2012	1,705	1,725		
06/09/2012	1,725	1,745	371.593	91,29
10/09/2012	1,730	1,750		
13/09/2012	1,730	1,750	364.480	91,44
17/09/2012	1,729	1,749		
20/09/2012	1,736	1,756	369.230	91,66
24/09/2012	1,735	1,755		
27/09/2012	1,735	1,755	375.116	91,97
01/10/2012	1,724	1,744		
04/10/2012	1,687	1,707	382.944	92,19
08/10/2012	1,672	1,692		
11/10/2012	1,632	1,652	390.580	92,14
15/10/2012	1,617	1,637		
18/10/2012	1,576	1,596	382.268	92,32
22/10/2012	1,561	1,581		
25/10/2012	1,523	1,543	386.883	92,26
29/10/2012	1,508	1,528		
31/10/2012	1,500	1,520	321.375	92,24
05/11/2012	1,500	1,520		
07/11/2012	1,505	1,525	394.895	92,90
12/11/2012	1,509	1,529		
15/11/2012	1,538	1,558	395.550	92,79
19/11/2012	1,527	1,547		
22/11/2012	1,502	1,522	389.107	92,69
26/11/2012	1,490	1,510		
29/11/2012	1,459	1,479	384.256	92,69
03/12/2012	1,446	1,466		
06/12/2012	1,411	1,431	387.055	92,68
10/12/2012	1,399	1,419		
14/12/2012	1,405	1,425	402.448	92,53
17/12/2012	1,401	1,421		
20/12/2012	1,403	1,423	366.227	92,41
24/12/2012	1,402	1,422		
27/12/2012	1,405	1,425	328.194	93,20
31/12/2012	1,403	1,423		
Media	1,455	1,475	19.546.824	92,13

* = Premio di qualità regionale

TMP = tasso di carne magra nei pezzi staccati

PLERIN 2012 - CARCASSE 56%
(Euro/Kg)



* = Premio di qualità regionale