



Mercato
Mercati nazionali

5.11.14.2



PERUGIA 2007

CAMERA DI COMMERCIO DI PERUGIA

Categoria: SUINI VIVI

Prezzi: (Franco Partenza) Per Kg peso vivo - IVA esclusa

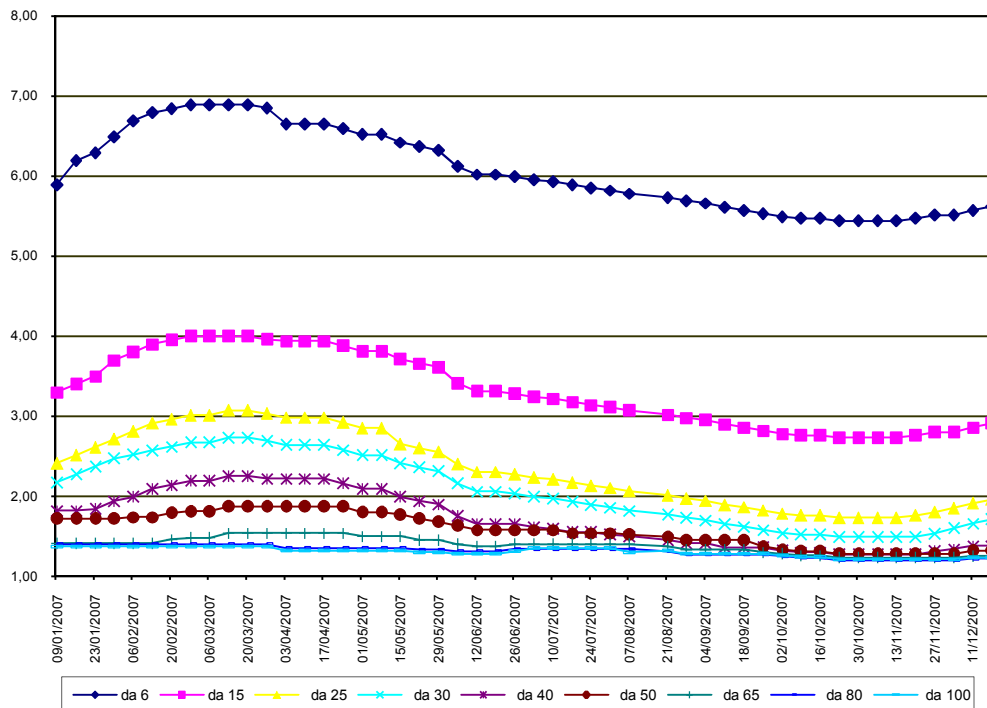
di Cosmino Giovanni Basile

SETTIMANE	SUINI D'ALLEVAMENTO (€/Kg)								
	da 6	da 15	da 25	da 30	da 40	da 50	da 65	da 80	da 100
09/01/2007	5,89	3,30	2,41	2,17	1,82	1,72	1,41	1,40	1,37
16/01/2007	6,19	3,40	2,51	2,27	1,82	1,72	1,41	1,40	1,37
23/01/2007	6,29	3,50	2,61	2,37	1,84	1,72	1,41	1,40	1,37
30/01/2007	6,49	3,70	2,71	2,47	1,94	1,72	1,41	1,40	1,37
06/02/2007	6,69	3,80	2,81	2,52	1,99	1,74	1,41	1,40	1,37
13/02/2007	6,79	3,90	2,91	2,57	2,09	1,74	1,41	1,40	1,37
20/02/2007	6,84	3,95	2,96	2,62	2,14	1,79	1,46	1,40	1,37
27/02/2007	6,89	4,00	3,01	2,67	2,19	1,81	1,48	1,40	1,37
06/03/2007	6,89	4,00	3,01	2,67	2,19	1,81	1,48	1,40	1,37
13/03/2007	6,89	4,00	3,07	2,73	2,25	1,87	1,54	1,40	1,37
20/03/2007	6,89	4,00	3,07	2,73	2,25	1,87	1,54	1,40	1,37
27/03/2007	6,85	3,96	3,03	2,69	2,22	1,87	1,54	1,40	1,37
03/04/2007	6,65	3,94	2,98	2,64	2,22	1,87	1,54	1,35	1,32
10/04/2007	6,65	3,94	2,98	2,64	2,22	1,87	1,54	1,35	1,32
17/04/2007	6,65	3,94	2,98	2,64	2,22	1,87	1,54	1,35	1,32
24/04/2007	6,59	3,88	2,92	2,58	2,16	1,87	1,54	1,35	1,32
01/05/2007	6,52	3,81	2,85	2,51	2,09	1,80	1,50	1,35	1,32
08/05/2007	6,52	3,81	2,85	2,51	2,09	1,80	1,50	1,35	1,32
15/05/2007	6,42	3,71	2,65	2,41	1,99	1,77	1,50	1,35	1,32
22/05/2007	6,37	3,66	2,60	2,36	1,94	1,72	1,45	1,33	1,30
29/05/2007	6,32	3,61	2,55	2,31	1,90	1,68	1,45	1,33	1,30
05/06/2007	6,12	3,41	2,40	2,16	1,75	1,63	1,40	1,31	1,28
12/06/2007	6,02	3,31	2,30	2,06	1,65	1,58	1,37	1,31	1,28
19/06/2007	6,02	3,31	2,30	2,06	1,65	1,58	1,37	1,31	1,28
26/06/2007	5,99	3,28	2,27	2,03	1,65	1,58	1,40	1,34	1,31
03/07/2007	5,95	3,24	2,23	1,99	1,61	1,58	1,40	1,34	1,35
10/07/2007	5,93	3,22	2,21	1,97	1,59	1,58	1,40	1,34	1,35
17/07/2007	5,89	3,18	2,17	1,93	1,55	1,54	1,40	1,34	1,35
24/07/2007	5,85	3,14	2,13	1,89	1,55	1,54	1,40	1,34	1,35
31/07/2007	5,82	3,11	2,10	1,86	1,52	1,54	1,40	1,34	1,35
07/08/2007	5,78	3,07	2,06	1,82	1,50	1,52	1,40	1,34	1,30
21/08/2007	5,73	3,02	2,01	1,77	1,45	1,49	1,37	1,31	1,32
28/08/2007	5,69	2,98	1,97	1,73	1,41	1,45	1,33	1,27	1,28
04/09/2007	5,66	2,95	1,94	1,70	1,41	1,45	1,33	1,27	1,28
11/09/2007	5,61	2,90	1,89	1,65	1,36	1,45	1,33	1,27	1,28
18/09/2007	5,57	2,86	1,86	1,62	1,36	1,45	1,33	1,27	1,28
25/09/2007	5,53	2,82	1,82	1,58	1,36	1,37	1,30	1,27	1,28
02/10/2007	5,49	2,78	1,78	1,54	1,32	1,33	1,28	1,25	1,26
09/10/2007	5,47	2,76	1,76	1,52	1,30	1,31	1,26	1,23	1,24
16/10/2007	5,47	2,76	1,76	1,52	1,30	1,31	1,26	1,23	1,24
23/10/2007	5,44	2,73	1,73	1,49	1,27	1,28	1,23	1,20	1,21
30/10/2007	5,44	2,73	1,73	1,49	1,27	1,28	1,23	1,20	1,21
06/11/2007	5,44	2,73	1,73	1,49	1,27	1,28	1,23	1,20	1,21
13/11/2007	5,44	2,73	1,73	1,49	1,27	1,28	1,23	1,20	1,21
20/11/2007	5,47	2,76	1,76	1,49	1,27	1,28	1,23	1,20	1,21
27/11/2007	5,51	2,80	1,80	1,53	1,31	1,28	1,23	1,20	1,21
04/12/2007	5,51	2,80	1,85	1,60	1,34	1,28	1,23	1,20	1,21
11/12/2007	5,57	2,86	1,91	1,66	1,38	1,32	1,25	1,22	1,23
18/12/2007	5,62	2,91	1,96	1,71	1,38	1,32	1,25	1,22	1,23
MEDIA	6,07	3,33	2,34	2,07	1,71	1,58	1,39	1,31	1,30

PERUGIA 2007

SETTIMANE	SUINI DA MACELLO (€/Kg)							
	90/115	115/130	130/144	144/156	156/176	176/180	180/185	> 185
09/01/2007	1,385	1,180	1,190	1,230	1,270	1,220	1,160	1,090
16/01/2007	1,415	1,210	1,220	1,260	1,300	1,250	1,190	1,120
23/01/2007	1,365	1,160	1,170	1,210	1,250	1,200	1,140	1,070
30/01/2007	1,300	1,130	1,140	1,180	1,220	1,170	1,110	1,040
06/02/2007	1,270	1,100	1,110	1,150	1,190	1,140	1,080	1,010
13/02/2007	1,210	1,060	1,070	1,110	1,150	1,100	1,040	1,010
20/02/2007	1,190	1,040	1,050	1,090	1,130	1,080	1,020	0,990
27/02/2007	1,190	1,030	1,040	1,080	1,120	1,070	1,010	0,980
06/03/2007	1,190	1,030	1,040	1,080	1,120	1,070	1,010	0,980
13/03/2007	1,190	1,050	1,060	1,100	1,140	1,090	1,030	1,000
20/03/2007	1,170	1,030	1,040	1,080	1,120	1,070	1,010	0,980
27/03/2007	1,170	1,030	1,040	1,080	1,120	1,070	1,010	0,980
03/04/2007	1,130	0,990	1,000	1,040	1,080	1,030	0,970	0,940
10/04/2007	1,130	0,990	1,000	1,040	1,080	1,030	0,970	0,940
17/04/2007	1,130	0,990	1,000	1,040	1,080	1,030	0,970	0,940
24/04/2007	1,130	0,990	1,000	1,040	1,080	1,030	0,970	0,940
01/05/2007	1,090	0,950	0,960	1,000	1,040	0,990	0,930	0,900
08/05/2007	1,090	0,950	0,960	1,000	1,040	0,990	0,930	0,900
15/05/2007	1,090	0,950	0,960	0,970	1,010	0,960	0,930	0,900
22/05/2007	1,090	0,950	0,960	0,970	1,010	0,960	0,930	0,900
29/05/2007	1,110	0,970	0,980	0,990	1,030	0,980	0,950	0,920
05/06/2007	1,110	0,970	0,980	0,990	1,030	0,980	0,950	0,920
12/06/2007	1,160	0,970	0,980	0,990	1,030	0,980	0,950	0,920
19/06/2007	1,260	1,070	1,080	1,090	1,130	1,080	1,050	1,020
26/06/2007	1,340	1,150	1,160	1,170	1,210	1,160	1,130	1,100
03/07/2007	1,340	1,150	1,160	1,170	1,210	1,160	1,130	1,100
10/07/2007	1,310	1,120	1,130	1,140	1,180	1,130	1,100	1,070
17/07/2007	1,260	1,070	1,080	1,090	1,130	1,080	1,050	1,020
24/07/2007	1,310	1,120	1,130	1,140	1,180	1,130	1,100	1,070
31/07/2007	1,330	1,140	1,150	1,160	1,200	1,150	1,120	1,090
07/08/2007	1,330	1,140	1,150	1,160	1,200	1,150	1,120	1,090
21/08/2007	1,390	1,200	1,210	1,220	1,260	1,210	1,180	1,150
28/08/2007	1,360	1,170	1,180	1,190	1,230	1,180	1,150	1,120
04/09/2007	1,360	1,170	1,180	1,190	1,230	1,180	1,150	1,120
11/09/2007	1,400	1,210	1,220	1,230	1,270	1,220	1,190	1,160
18/09/2007	1,400	1,210	1,220	1,230	1,270	1,220	1,190	1,160
25/09/2007	1,370	1,180	1,190	1,200	1,240	1,190	1,160	1,130
02/10/2007	1,340	1,140	1,150	1,160	1,200	1,150	1,120	1,090
09/10/2007	1,310	1,120	1,130	1,140	1,180	1,130	1,100	1,070
16/10/2007	1,310	1,120	1,130	1,140	1,180	1,130	1,100	1,070
23/10/2007	1,280	1,120	1,130	1,140	1,180	1,130	1,100	1,070
30/10/2007	1,300	1,140	1,150	1,160	1,200	1,150	1,120	1,090
06/11/2007	1,330	1,170	1,180	1,190	1,230	1,180	1,150	1,120
13/11/2007	1,370	1,210	1,220	1,230	1,270	1,220	1,190	1,160
20/11/2007	1,410	1,250	1,260	1,270	1,310	1,260	1,230	1,200
27/11/2007	1,450	1,290	1,300	1,310	1,350	1,300	1,270	1,240
04/12/2007	1,450	1,290	1,300	1,310	1,350	1,300	1,270	1,240
11/12/2007	1,430	1,270	1,280	1,290	1,330	1,280	1,250	1,220
18/12/2007	1,400	1,240	1,250	1,260	1,300	1,250	1,220	1,190
MEDIA	1,274	1,106	1,116	1,137	1,177	1,127	1,086	1,052

PERUGIA 2007
SUINI D'ALLEVAMENTO
 (Euro/Kg)



PERUGIA 2007
SUINI DA MACELLO
 (Euro/Kg)

