



Mercato
Mercati nazionali

12/2009

5.7.19.2



CREMONA 2009

CAMERA DI COMMERCIO DI CREMONA

Categoria: SUINI VIVI

Prezzi: (Franco Partenza) Per Kg peso vivo - IVA esclusa

di Cosmino Giovanni Basile

SETTIMANE	SUINI D'ALLEVAMENTO (€/Kg)							
	< a 15	da 25	da 30	da 40	da 50	da 65	da 80	da 100
07/01/2009	3,47	2,55	2,40	1,97	1,84	1,58	1,42	nq
14/01/2009	3,52	2,58	2,43	2,00	1,84	1,58	1,42	nq
21/01/2009	3,57	2,63	2,48	2,03	1,84	1,58	1,42	nq
28/01/2009	3,62	2,65	2,50	2,05	1,84	1,58	1,42	nq
04/02/2009	3,64	2,66	2,50	2,05	1,84	1,58	1,42	nq
11/02/2009	3,64	2,66	2,50	2,05	1,84	1,58	1,42	nq
18/02/2009	3,64	2,66	2,50	2,05	1,84	1,58	1,42	nq
25/02/2009	3,64	2,66	2,50	2,05	1,84	1,58	1,42	nq
04/03/2009	3,61	2,64	2,49	2,04	1,84	1,58	1,42	nq
11/03/2009	3,59	2,62	2,47	2,02	1,84	1,57	1,40	nq
18/03/2009	3,59	2,62	2,47	2,02	1,84	1,57	1,40	nq
25/03/2009	3,59	2,62	2,47	2,02	1,84	1,57	1,40	nq
01/04/2009	3,59	2,62	2,47	2,02	1,84	1,57	1,40	nq
08/04/2009	3,59	2,62	2,47	2,04	1,86	1,59	1,40	nq
15/04/2009	3,59	2,62	2,48	2,06	1,88	1,61	1,40	nq
22/04/2009	3,59	2,62	2,49	2,07	1,89	1,62	1,40	nq
29/04/2009	3,59	2,62	2,49	2,07	1,89	1,62	1,40	nq
06/05/2009	3,59	2,62	2,49	2,07	1,89	1,62	1,40	nq
13/05/2009	3,59	2,62	2,49	2,07	1,89	1,62	1,40	nq
20/05/2009	3,59	2,62	2,49	2,07	1,89	1,62	1,40	nq
27/05/2009	3,55	2,58	2,49	2,07	1,89	1,62	1,40	nq
03/06/2009	3,52	2,56	2,47	2,07	1,89	1,62	1,40	nq
10/06/2009	3,49	2,54	2,45	2,07	1,89	1,62	1,40	nq
17/06/2009	3,45	2,51	2,43	2,07	1,89	1,62	1,40	nq
24/06/2009	3,40	2,48	2,40	2,07	1,89	1,62	1,40	nq
01/07/2009	3,35	2,45	2,37	2,05	1,89	1,62	1,40	nq
08/07/2009	3,30	2,41	2,35	2,03	1,89	1,62	1,40	nq
15/07/2009	3,26	2,37	2,31	2,00	1,89	1,62	1,40	nq
22/07/2009	3,22	2,34	2,27	1,98	1,89	1,62	1,40	nq
29/07/2009	3,18	2,31	2,23	1,95	1,86	1,62	1,40	nq
05/08/2009	3,16	2,29	2,19	1,92	1,83	1,62	1,40	nq
26/08/2009	3,15	2,25	2,08	1,80	1,68	1,55	1,33	nq
02/09/2009	3,15	2,22	2,05	1,76	1,65	1,53	1,33	nq
09/09/2009	3,15	2,21	2,02	1,72	1,63	1,52	1,33	nq
16/09/2009	3,15	2,20	1,99	1,68	1,59	1,51	1,33	nq
23/09/2009	3,15	2,20	1,96	1,65	1,56	1,51	1,33	nq
30/09/2009	3,15	2,20	1,94	1,63	1,54	1,49	1,33	nq
07/10/2009	3,14	2,19	1,93	1,62	1,53	1,48	1,33	nq
14/10/2009	3,13	2,17	1,90	1,58	1,50	1,46	1,33	nq
21/10/2009	3,13	2,17	1,89	1,56	1,47	1,44	1,33	nq
28/10/2009	3,13	2,17	1,89	1,54	1,45	1,42	1,33	nq
04/11/2009	3,14	2,17	1,89	1,53	1,44	1,40	1,33	nq
11/11/2009	3,14	2,17	1,89	1,53	1,42	1,38	1,32	nq
18/11/2009	3,16	2,19	1,89	1,53	1,41	1,38	1,32	nq
25/11/2009	3,19	2,20	1,90	1,54	1,42	1,38	1,32	nq
02/12/2009	3,23	2,23	1,92	1,54	1,42	1,38	1,32	nq
09/12/2009	3,28	2,27	1,95	1,54	1,42	1,38	1,32	nq
16/12/2009	3,33	2,30	1,98	1,57	1,44	1,38	1,32	nq
23/12/2009	3,33	2,30	1,98	1,57	1,44	1,38	1,32	nq
30/12/2009	3,44	2,40	2,08	1,67	1,48	1,38	1,32	nq
MEDIA	3,39	2,43	2,25	1,87	1,73	1,54	1,38	nq

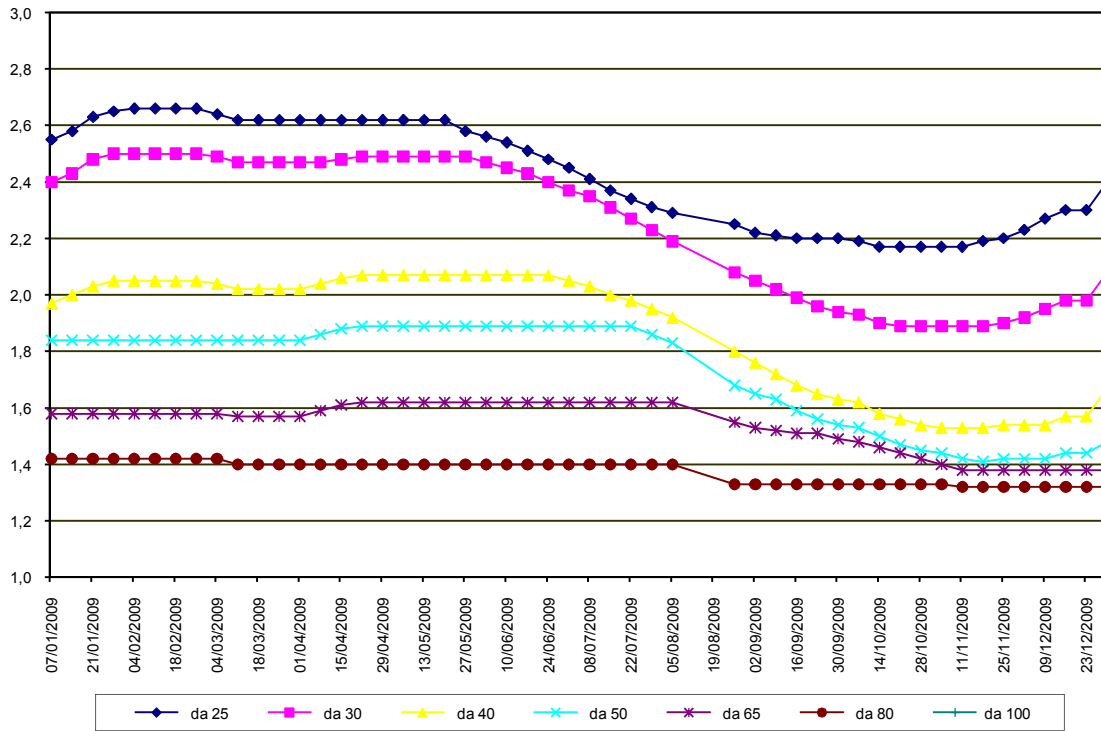
nq = non quotati

CREMONA 2009

SETTIMANE	SUINI DA MACELLO (€/Kg)								
	90/115	da 115	da 130	da 144	da 156	da 166	da 176	da 180	> 180
07/01/2009	nq	1,180	1,200	1,220	1,250	1,250	1,250	1,250	1,150
14/01/2009	nq	1,215	1,235	1,255	1,285	1,285	1,285	1,285	1,185
21/01/2009	nq	1,190	1,210	1,230	1,260	1,260	1,260	1,260	1,160
28/01/2009	nq	1,155	1,175	1,195	1,225	1,225	1,225	1,225	1,125
04/02/2009	nq	1,100	1,120	1,140	1,170	1,170	1,170	1,170	1,070
11/02/2009	nq	1,070	1,090	1,110	1,140	1,140	1,140	1,140	1,040
18/02/2009	nq	1,055	1,075	1,095	1,125	1,125	1,125	1,125	1,025
25/02/2009	nq	1,020	1,040	1,060	1,090	1,090	1,090	1,090	0,990
04/03/2009	nq	1,020	1,040	1,060	1,090	1,090	1,090	1,090	0,990
11/03/2009	nq	1,010	1,030	1,050	1,080	1,080	1,080	1,080	0,980
18/03/2009	nq	0,995	1,015	1,035	1,065	1,065	1,065	1,065	0,965
25/03/2009	nq	0,995	1,015	1,035	1,065	1,065	1,065	1,065	0,965
01/04/2009	nq	1,035	1,055	1,075	1,105	1,105	1,105	1,105	1,005
08/04/2009	nq	1,060	1,080	1,100	1,130	1,130	1,130	1,130	1,030
15/04/2009	nq	1,060	1,080	1,100	1,130	1,130	1,130	1,130	1,030
22/04/2009	nq	1,040	1,060	1,080	1,110	1,110	1,110	1,110	1,010
29/04/2009	nq	0,970	0,990	1,010	1,040	1,040	1,040	1,040	0,940
06/05/2009	nq	0,965	0,985	1,005	1,035	1,035	1,035	1,035	0,935
13/05/2009	nq	0,965	0,985	1,005	1,035	1,035	1,035	1,035	0,935
20/05/2009	nq	1,010	1,030	1,050	1,080	1,080	1,080	1,080	0,980
27/05/2009	nq	1,050	1,070	1,090	1,120	1,120	1,120	1,120	1,020
03/06/2009	nq	1,065	1,085	1,105	1,135	1,135	1,135	1,135	1,035
10/06/2009	nq	1,080	1,100	1,120	1,150	1,150	1,150	1,150	1,050
17/06/2009	nq	1,115	1,135	1,155	1,185	1,185	1,185	1,185	1,085
24/06/2009	nq	1,160	1,180	1,200	1,230	1,230	1,230	1,230	1,130
01/07/2009	nq	1,180	1,200	1,220	1,250	1,250	1,250	1,250	1,150
08/07/2009	nq	1,150	1,170	1,190	1,220	1,220	1,220	1,220	1,120
15/07/2009	nq	1,120	1,140	1,160	1,190	1,190	1,190	1,190	1,090
22/07/2009	nq	1,130	1,150	1,170	1,200	1,200	1,200	1,200	1,100
29/07/2009	nq	1,165	1,185	1,205	1,235	1,235	1,235	1,235	1,135
05/08/2009	nq	1,200	1,220	1,240	1,270	1,270	1,270	1,270	1,170
26/08/2009	nq	1,330	1,350	1,370	1,400	1,400	1,400	1,400	1,300
02/09/2009	nq	1,330	1,350	1,370	1,400	1,400	1,400	1,400	1,300
09/09/2009	nq	1,295	1,315	1,335	1,365	1,365	1,365	1,365	1,265
16/09/2009	nq	1,265	1,285	1,305	1,335	1,335	1,335	1,335	1,235
23/09/2009	nq	1,285	1,305	1,325	1,355	1,355	1,355	1,355	1,255
30/09/2009	nq	1,310	1,330	1,350	1,380	1,380	1,380	1,380	1,280
07/10/2009	nq	1,290	1,310	1,330	1,360	1,360	1,360	1,360	1,260
14/10/2009	nq	1,265	1,285	1,305	1,335	1,335	1,335	1,335	1,235
21/10/2009	nq	1,250	1,270	1,290	1,320	1,320	1,320	1,320	1,220
28/10/2009	nq	1,245	1,265	1,285	1,315	1,315	1,315	1,315	1,215
04/11/2009	nq	1,230	1,250	1,270	1,300	1,305	1,305	1,305	1,205
11/11/2009	nq	1,205	1,225	1,245	1,275	1,280	1,280	1,280	1,180
18/11/2009	nq	1,205	1,225	1,245	1,275	1,275	1,275	1,275	1,175
25/11/2009	nq	1,205	1,225	1,245	1,275	1,280	1,280	1,280	1,180
02/12/2009	nq	1,205	1,225	1,245	1,275	1,280	1,280	1,280	1,180
09/12/2009	nq	1,205	1,225	1,245	1,275	1,280	1,280	1,280	1,180
16/12/2009	nq	1,195	1,215	1,235	1,265	1,270	1,270	1,270	1,170
23/12/2009	nq	1,175	1,195	1,215	1,245	1,250	1,250	1,250	1,150
30/12/2009	nq	1,185	1,205	1,225	1,255	1,260	1,260	1,260	1,160
MEDIA	nq	1,144	1,164	1,184	1,214	1,215	1,215	1,215	1,115

nq = non quotati

CREMONA 2009
SUINI D'ALLEVAMENTO
 (Euro/Kg)



CREMONA 2009
SUINI DA MACELLO
(Euro/Kg)

