

CREMONA 2001

CAMERA DI COMMERCIO DI CREMONA

Categoria: SUINI VIVI

Prezzi: (Franco Partenza) Per Kg peso vivo - IVA esclusa

di Cosmino Giovanni Basile

| SETTIMANE | SUINI D'ALLEVAMENTO (€/Kg) | | | | | | | |
|--------------|----------------------------|-------------|-------------|-------------|-------------|-------------|-------------|-------------|
| | < a 15 | da 25 | da 30 | da 40 | da 50 | da 65 | da 80 | da 100 |
| 03/01/2001 | nq | 2,76 | 2,56 | 2,30 | 2,04 | 1,76 | 1,50 | 1,47 |
| 10/01/2001 | nq | 2,84 | 2,63 | 2,35 | 2,04 | 1,76 | 1,50 | 1,47 |
| 17/01/2001 | nq | 2,84 | 2,63 | 2,35 | 2,04 | 1,76 | 1,50 | 1,47 |
| 24/01/2001 | nq | 2,89 | 2,69 | 2,38 | 2,07 | 1,76 | 1,50 | 1,47 |
| 31/01/2001 | nq | 3,00 | 2,79 | 2,43 | 2,12 | 1,81 | 1,55 | 1,52 |
| 07/02/2001 | nq | 3,07 | 2,87 | 2,48 | 2,17 | 1,83 | 1,58 | 1,55 |
| 14/02/2001 | nq | 3,12 | 2,92 | 2,50 | 2,17 | 1,83 | 1,58 | 1,55 |
| 21/02/2001 | nq | 3,18 | 2,97 | 2,56 | 2,19 | 1,86 | 1,60 | 1,58 |
| 28/02/2001 | nq | 3,25 | 3,00 | 2,58 | 2,22 | 1,89 | 1,63 | 1,60 |
| 07/03/2001 | nq | 3,38 | 3,10 | 2,66 | 2,30 | 1,94 | 1,68 | 1,65 |
| 14/03/2001 | nq | 3,49 | 3,20 | 2,76 | 2,40 | 1,99 | 1,73 | 1,70 |
| 21/03/2001 | nq | 3,51 | 3,23 | 2,79 | 2,40 | 1,99 | 1,73 | 1,70 |
| 28/03/2001 | nq | 3,51 | 3,23 | 2,79 | 2,40 | 1,99 | 1,73 | 1,70 |
| 04/04/2001 | nq | 3,51 | 3,23 | 2,79 | 2,40 | 1,99 | 1,73 | 1,70 |
| 11/04/2001 | nq | 3,51 | 3,23 | 2,79 | 2,40 | 1,99 | 1,73 | 1,70 |
| 18/04/2001 | nq | 3,54 | 3,25 | 2,81 | 2,40 | 1,99 | 1,73 | 1,70 |
| 02/05/2001 | nq | 3,59 | 3,31 | 2,87 | 2,43 | 1,99 | 1,73 | 1,70 |
| 09/05/2001 | nq | 3,64 | 3,33 | 2,89 | 2,48 | 2,01 | 1,73 | 1,70 |
| 16/05/2001 | nq | 3,67 | 3,36 | 2,92 | 2,50 | 2,04 | 1,76 | 1,73 |
| 23/05/2001 | nq | 3,67 | 3,36 | 2,92 | 2,50 | 2,04 | 1,76 | 1,73 |
| 30/05/2001 | nq | 3,72 | 3,41 | 2,97 | 2,56 | 2,04 | 1,76 | 1,73 |
| 06/06/2001 | nq | 3,74 | 3,43 | 3,00 | 2,58 | 2,07 | 1,78 | 1,76 |
| 13/06/2001 | nq | 3,74 | 3,46 | 3,02 | 2,63 | 2,12 | 1,83 | 1,81 |
| 20/06/2001 | nq | 3,74 | 3,46 | 3,02 | 2,69 | 2,17 | 1,89 | 1,86 |
| 27/06/2001 | nq | 3,74 | 3,46 | 3,02 | 2,69 | 2,17 | 1,89 | 1,86 |
| 04/07/2001 | nq | 3,62 | 3,36 | 2,92 | 2,63 | 2,12 | 1,83 | 1,81 |
| 11/07/2001 | nq | 3,56 | 3,30 | 2,89 | 2,61 | 2,09 | 1,81 | 1,78 |
| 18/07/2001 | nq | 3,51 | 3,25 | 2,87 | 2,61 | 2,09 | 1,81 | 1,78 |
| 25/07/2001 | nq | 3,43 | 3,18 | 2,79 | 2,58 | 2,09 | 1,81 | 1,78 |
| 01/08/2001 | nq | 3,38 | 3,12 | 2,79 | 2,61 | 2,12 | 1,83 | 1,81 |
| 29/08/2001 | nq | 3,28 | 3,05 | 2,74 | 2,56 | 2,12 | 1,83 | 1,81 |
| 03/09/2001 | nq | 3,23 | 3,00 | 2,71 | 2,53 | 2,12 | 1,83 | 1,81 |
| 12/09/2001 | nq | 3,12 | 2,94 | 2,63 | 2,45 | 2,09 | 1,81 | 1,78 |
| 19/09/2001 | nq | 3,02 | 2,87 | 2,56 | 2,40 | 2,04 | 1,76 | 1,73 |
| 26/09/2001 | nq | 2,92 | 2,79 | 2,48 | 2,32 | 1,99 | 1,70 | 1,68 |
| 03/10/2001 | nq | 2,84 | 2,71 | 2,40 | 2,27 | 1,94 | 1,68 | 1,65 |
| 10/10/2001 | nq | 2,76 | 2,63 | 2,32 | 2,19 | 1,89 | 1,63 | 1,60 |
| 17/10/2001 | nq | 2,70 | 2,57 | 2,26 | 2,14 | 1,83 | 1,58 | 1,55 |
| 24/10/2001 | nq | 2,64 | 2,52 | 2,21 | 2,09 | 1,78 | 1,52 | 1,50 |
| 31/10/2001 | nq | 2,58 | 2,45 | 2,15 | 2,04 | 1,73 | 1,50 | 1,47 |
| 07/11/2001 | nq | 2,50 | 2,38 | 2,08 | 1,96 | 1,65 | 1,42 | 1,39 |
| 14/11/2001 | nq | 2,50 | 2,38 | 2,17 | 1,96 | 1,65 | 1,42 | 1,39 |
| 21/11/2001 | nq | 2,56 | 2,43 | 2,17 | 1,96 | 1,65 | 1,42 | 1,39 |
| 28/11/2001 | nq | 2,61 | 2,43 | 2,17 | 1,96 | 1,65 | 1,42 | 1,39 |
| 05/12/2001 | nq | 2,61 | 2,43 | 2,17 | 1,96 | 1,65 | 1,42 | 1,39 |
| 12/12/2001 | nq | 2,61 | 2,43 | 2,17 | 1,96 | 1,65 | 1,42 | 1,39 |
| 19/12/2001 | nq | 2,61 | 2,43 | 2,17 | 1,96 | 1,65 | 1,42 | 1,39 |
| MEDIA | nq | 3,18 | 2,95 | 2,59 | 2,31 | 1,92 | 1,66 | 1,63 |

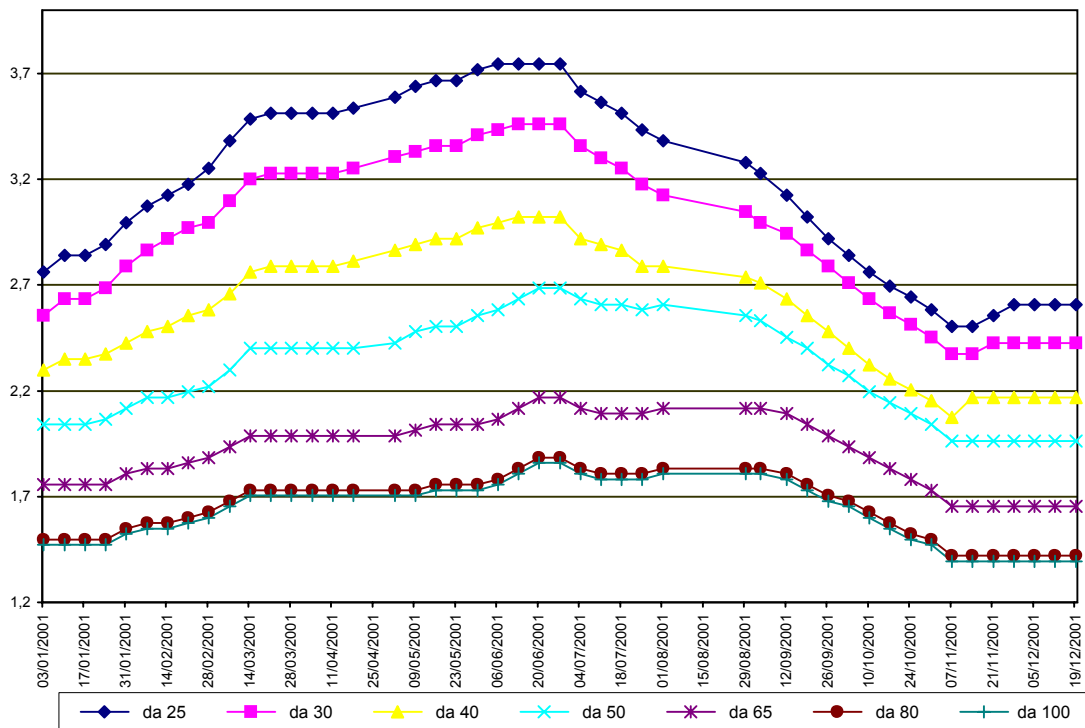
nq = non quotati

CREMONA 2001

| SETTIMANE | SUINI DA MACELLO (€/Kg) | | | | | | | | |
|--------------|-------------------------|---------------|---------------|---------------|---------------|---------------|---------------|---------------|-----------------|
| | 90/115 | da 115 | da 130 | da 144 | da 156 | da 166 | da 176 | da 180 | > 180 |
| 03/01/2001 | nq | nq | 1,472 | 1,534 | 1,544 | 1,539 | 1,441 | 1,400 | |
| 10/01/2001 | nq | nq | 1,431 | 1,493 | 1,503 | 1,498 | 1,400 | 1,358 | |
| 17/01/2001 | nq | nq | 1,379 | 1,441 | 1,451 | 1,446 | 1,348 | 1,307 | |
| 24/01/2001 | nq | nq | 1,431 | 1,493 | 1,503 | 1,498 | 1,400 | 1,358 | |
| 31/01/2001 | nq | nq | 1,487 | 1,549 | 1,560 | 1,555 | 1,456 | 1,415 | |
| 07/02/2001 | nq | nq | 1,482 | 1,544 | 1,555 | 1,549 | 1,451 | 1,410 | |
| | 90/115 | da 115 | da 130 | da 144 | da 156 | da 166 | da 176 | da 180 | > 180 |
| 14/02/2001 | nq | 1,436 | 1,467 | 1,524 | 1,549 | 1,549 | 1,549 | 1,441 | 1,369 |
| 21/02/2001 | nq | 1,477 | 1,508 | 1,565 | 1,591 | 1,591 | 1,591 | 1,482 | 1,410 |
| 28/02/2001 | nq | 1,503 | 1,534 | 1,591 | 1,617 | 1,617 | 1,617 | 1,508 | 1,436 |
| 07/03/2001 | nq | 1,539 | 1,570 | 1,627 | 1,653 | 1,653 | 1,653 | 1,544 | 1,472 |
| 14/03/2001 | nq | 1,601 | 1,632 | 1,689 | 1,715 | 1,715 | 1,715 | 1,606 | 1,534 |
| 21/03/2001 | nq | 1,565 | 1,596 | 1,653 | 1,678 | 1,678 | 1,678 | 1,570 | 1,498 |
| 28/03/2001 | nq | 1,508 | 1,539 | 1,596 | 1,622 | 1,622 | 1,622 | 1,513 | 1,441 |
| 04/04/2001 | nq | 1,456 | 1,487 | 1,544 | 1,570 | 1,570 | 1,570 | 1,462 | 1,389 |
| 11/04/2001 | nq | 1,456 | 1,487 | 1,544 | 1,570 | 1,570 | 1,570 | 1,462 | 1,389 |
| 18/04/2001 | nq | 1,456 | 1,487 | 1,544 | 1,570 | 1,570 | 1,570 | 1,462 | 1,389 |
| 02/05/2001 | nq | 1,456 | 1,487 | 1,544 | 1,570 | 1,570 | 1,570 | 1,462 | 1,389 |
| 09/05/2001 | nq | 1,431 | 1,462 | 1,518 | 1,544 | 1,544 | 1,544 | 1,436 | 1,363 |
| 16/05/2001 | nq | 1,400 | 1,415 | 1,472 | 1,513 | 1,513 | 1,513 | 1,400 | 1,327 |
| 23/05/2001 | nq | 1,376 | 1,392 | 1,449 | 1,490 | 1,490 | 1,490 | 1,376 | 1,304 |
| 30/05/2001 | nq | 1,366 | 1,382 | 1,438 | 1,480 | 1,480 | 1,480 | 1,366 | 1,294 |
| 06/06/2001 | nq | 1,371 | 1,392 | 1,449 | 1,490 | 1,490 | 1,485 | 1,376 | 1,304 |
| 13/06/2001 | nq | 1,441 | 1,462 | 1,518 | 1,560 | 1,560 | 1,555 | 1,446 | 1,374 |
| 20/06/2001 | nq | 1,508 | 1,529 | 1,586 | 1,627 | 1,627 | 1,622 | 1,513 | 1,441 |
| 27/06/2001 | nq | 1,482 | 1,503 | 1,560 | 1,601 | 1,601 | 1,596 | 1,487 | 1,415 |
| 04/07/2001 | nq | 1,405 | 1,425 | 1,482 | 1,524 | 1,524 | 1,518 | 1,410 | 1,338 |
| 11/07/2001 | nq | 1,343 | 1,363 | 1,420 | 1,462 | 1,462 | 1,456 | 1,348 | 1,276 |
| 18/07/2001 | nq | 1,379 | 1,400 | 1,456 | 1,498 | 1,498 | 1,493 | 1,384 | 1,312 |
| 25/07/2001 | nq | 1,456 | 1,477 | 1,534 | 1,575 | 1,575 | 1,570 | 1,462 | 1,389 |
| 01/08/2001 | nq | 1,529 | 1,549 | 1,606 | 1,647 | 1,647 | 1,642 | 1,534 | 1,462 |
| 29/08/2001 | nq | 1,513 | 1,529 | 1,586 | 1,632 | 1,632 | 1,627 | 1,518 | 1,446 |
| 03/09/2001 | nq | 1,524 | 1,544 | 1,601 | 1,642 | 1,642 | 1,637 | 1,529 | 1,456 |
| 12/09/2001 | nq | 1,518 | 1,539 | 1,596 | 1,637 | 1,637 | 1,632 | 1,524 | 1,451 |
| 19/09/2001 | nq | 1,503 | 1,524 | 1,580 | 1,622 | 1,622 | 1,617 | 1,508 | 1,436 |
| 26/09/2001 | nq | 1,487 | 1,508 | 1,565 | 1,606 | 1,606 | 1,601 | 1,493 | 1,420 |
| 03/10/2001 | nq | 1,462 | 1,482 | 1,539 | 1,580 | 1,580 | 1,575 | 1,467 | 1,394 |
| 10/10/2001 | nq | 1,389 | 1,410 | 1,467 | 1,508 | 1,508 | 1,503 | 1,394 | 1,322 |
| 17/10/2001 | nq | 1,343 | 1,363 | 1,420 | 1,462 | 1,462 | 1,456 | 1,348 | 1,276 |
| 24/10/2001 | nq | 1,301 | 1,322 | 1,379 | 1,420 | 1,420 | 1,415 | 1,307 | 1,234 |
| 31/10/2001 | nq | 1,255 | 1,276 | 1,348 | 1,389 | 1,389 | 1,384 | 1,276 | 1,203 |
| 07/11/2001 | nq | 1,203 | 1,224 | 1,296 | 1,338 | 1,338 | 1,332 | 1,224 | 1,152 |
| 14/11/2001 | nq | 1,203 | 1,224 | 1,296 | 1,338 | 1,338 | 1,332 | 1,224 | 1,152 |
| 21/11/2001 | nq | 1,260 | 1,281 | 1,353 | 1,394 | 1,394 | 1,389 | 1,281 | 1,209 |
| 28/11/2001 | nq | 1,234 | 1,255 | 1,327 | 1,369 | 1,369 | 1,363 | 1,255 | 1,183 |
| 05/12/2001 | nq | 1,172 | 1,193 | 1,265 | 1,307 | 1,307 | 1,301 | 1,193 | 1,121 |
| 12/12/2001 | nq | 1,152 | 1,172 | 1,245 | 1,286 | 1,286 | 1,281 | 1,172 | 1,100 |
| 19/12/2001 | nq | 1,131 | 1,152 | 1,224 | 1,265 | 1,265 | 1,260 | 1,152 | 1,079 |
| MEDIA | nq | 1,405 | 1,431 | 1,492 | 1,524 | 1,523 | 1,502 | 1,406 | 1,340 |

nq = non quotati

CREMONA 2001 SUINI D'ALLEVAMENTO (Euro/Kg)



CREMONA 2001
SUINI DA MACELLO
 (Euro/Kg)

